

20 December 2013

## Lae Chamber of Commerce Inc. Weekly News Update

VOLUME: 51 - 13

### LAE CHAMBER OF COMMERCE INC.

Room 5, the  
Professionals Building,  
5<sup>th</sup> Street  
P O Box 265, Lae 411  
Morobe Province  
Papua New Guinea

Tel: (675) 472 2340  
Fax: (675) 472 6038

E-mail:  
[president@lcci.org.pg](mailto:president@lcci.org.pg)  
[info@lcci.org.pg](mailto:info@lcci.org.pg)

Website:  
[www.lcci.org.pg](http://www.lcci.org.pg)

The website is main-  
tained by Kuakawa  
Business Solutions on  
[support@kuakawa.biz](mailto:support@kuakawa.biz).

**THE LAE CHAMBER OF  
COMMERCE WILL CLOSE  
THE OFFICE ON CHRIST-  
MAS EVE 24<sup>TH</sup> DECEMBER  
2013 AND REOPEN AGAIN  
ON TUESDAY 7<sup>TH</sup> JANU-  
ARY 2014. WE WILL  
MONITOR MESSAGES  
OVER THIS PERIOD AND  
ADVISE OF ANY IMPOR-  
TANT NOTICES.**

### Index

In this Issue

#### From the Presidents Desk

Christmas Greeting

Lae Roads

Kina Finance open new  
office

World Chamber Federa-  
tion news

Letter from Morobe Min-  
ing

Lae to host Game Fishing  
Championships

Report on Bora Bridge

*Thank you*

### FROM THE PRESIDENTS DESK



## MERRY CHRISTMAS TO ALL LCCI MEMBERS AND HAVE AN ENJOYABLE FESTIVE SEASON



We advise all members that the LCCI Office will be closed from Tuesday 24<sup>th</sup> December 2013 and will reopen on Tuesday 7<sup>th</sup> January 2014. Whilst the office will be officially closed, we will monitor the mail during this period and any crucial items or events that we will attend to as well. There will be no **News Updates** during this period but we will continue to circulate urgent messages as required.

**We wish all members, staff, associates and families of the Lae Chamber of Commerce Inc. a safe and happy Christmas leading onto a prosperous New Year.**

We take this opportunity to advise members to keep in mind the following:

- If you drink make sure you nominate a dedicated driver who remains sober. Make sure the car doors are locked when driving and do not stop or pick up unknown passengers.
- Drive only along well known roads and avoid going into areas that you are unsure about. Try to avoid crowds that assemble along roads.
- When you park your vehicle double check that all doors are locked.
- If you leave your house make sure it is as secure as possible, and if there is an alarm system make sure it is armed. A good best option is to leave someone on your property during your absence.

The Police advise that they will be out in full strength during the festive season, to make sure that the city is as safe as possible. Whilst we hope that everyone is looking to have a good time, there are always the criminals and misfits who try to take advantage of this time of the year to pursue crime and other anti-social behaviour. The Police are more than happy to be reinforced by the contingent of Australian Federal Police, and they say that they will be out there, walking the beat, in an endeavor to keep the crime under control.

The special operation that the Lae Police will mount over the Christmas and New Year period is to make sure that Lae remains as peaceful as possible. To make this operation run as smooth as possible, the Police have requested assistance from the Business Community with donations of **Tea, Coffee, Biscuits and drinks including bottled water.**

**ANY DONATIONS THAT YOU CAN MAKE PLEASE DROP THEM OFF AT THE LAE CHAMBERS OFFICE DURING WORKING HOURS & WE WILL ENSURE THAT THESE GET TO THE POLICE WHO NEED THEM.**

Lae is full of visiting people at the moment, many of who have come from distant locations and provinces. A lot of these people will want to return to their own homes after Christmas and into the New Year, and will not have the means or the funds to do so. Some will turn to crime by stealing cars or robbing individuals, or break into homes and offices, so please keep on your guard at all times during this period.

Now you have **MORE CHOICES**  
from PNG's **LARGEST RANGE**  
of Vehicles, Trucks and Equipment with  
**Full Service & Parts Backup**  
Countrywide

• NISSAN • MITSUBISHI • ISUZU • MERCEDES • UD NISSAN DIESEL • KENWORTH • NEW HOLLAND • TCM  
• FUSO • HONDA • JOHNSON/EVINRUDE

**LAE BRANCH**  
PO BOX 609,  
MILFORDHAVEN ROAD, LAE  
MOROBE PROVINCE,  
PAPUA NEW GUINEA.  
PH: 472 1144  
FX: 472 6206

**Other Branches**  
PORT MORESBY  
MT HAGEN  
TABUAIL  
RABAU  
ph: 325 5255  
ph: 542 1933  
ph: 548 9048  
ph: 982 8193

**Dealers**  
MADANG  
KIMBE  
ph: 852 2659  
ph: 983 5035

**EMAIL:** [info@borokomotors.com.pg](mailto:info@borokomotors.com.pg)  
**WEBSITE:** [www.borokomotors.com.pg](http://www.borokomotors.com.pg)  
[www.nissan.com.pg](http://www.nissan.com.pg)

President

Alan McLay

Snr Vice President

Nigel Merrick

Jnr Vice President

Robert Howden

Treasurer

Stephen Beach

Councillors

Philip Franklin  
Peter Diezmann  
Kaity Bluet  
Dennis Brewster  
Terry Fuery  
Danny Kepi  
Andrew Gunn  
Mike Quinn  
Vanessa Chan Pelgen  
Belinda Edwards  
Samadhi Lewis

**Objectives  
of the LCCI**

- To promote the business interests of the private sector;
- To further the economic development in Lae;
- To ensure the provision of services and utilities essential to such development;
- To provide a representative body for business people, which government can consult;
- To promote support or oppose legislation; or take any other measures to improve the business community;
- To provide a forum for discussion of private sector goals;
- To pool the strengths of business people so that together, they can accomplish tasks that each one alone cannot achieve;
- To promote the economic viability of the area, so those current businesses will grow and new ones will be developed locally;
- To provide business with a common voice.



**Opening Soon April 2014 is the Ultimate  
Conference Centre for Morobe Province**

**BOOKINGS AVAILABLE CONTACT BUSINESS CENTRE**  
Ph: 472 2000 Direct Reservations 472 7000 Fax: 472 2121  
E: [business@laeinterhotel.com](mailto:business@laeinterhotel.com)

Like Us on Face book and Google Plus [www.laeinterhotel.com](http://www.laeinterhotel.com)

**LAE ROADS**

For some reason the Lae Chamber of Commerce has come under a bit of flack about not being critical of the lack of proper procedures and accountability of the Lae Roads Project past and present.

Whilst we really do not need to justify ourselves, the LCCI took the approach from 2010 that as the funds had been allocated for the Lae roads, and the work was being done, we wanted to ensure the best job was done considering all the facts that we were aware of – improper tender procedures, partiality in awarding contracts, lack of proper designs, questionable supervision by engineers and so on.

By June 2011 the six contracts that had been signed on Boxing Day 2010 were all underway. It was clear that there were a lot of defects in the procedures, and we raised our concerns at a meeting of the Morobe Provincial Coordination and Monitoring Committee, which approved the establishment of a “Lae Roads Technical Sub Committee”. Two meetings of this committee were held in the LCCI Board Room in the following weeks, attended by the Regional and Provincial Works Managers, the National Roads Authority, the City Engineer, Independent Civil Engineers and the LCCI. The following conditions were set up:

- All the contractors would have to submit weekly plans to minimise disruption of traffic.
- Drawings/design – in the absence of suitable drawings, the committee requested that the overseeing engineers insist on securing test results; concrete slump test, compressive strength tests for every concrete pour. Concrete kerbs, footpaths and drainage must be done as part of the works and not as an afterthought.
- Pavement Works Standards - The sub-grade is to be done properly before pouring the concrete. Concrete is only as good as the material that supports it and if there is a weak underlay, then early cracks will appear.
- Drainage works - certain outfalls within the current road works must be constructed to carry the run-offs all the way to where there are 7 major drainage outflows in the city. All drainage must be linked with these.
- Traffic Management is to be planned and the public advised so as to avoid congestion.

As a result of these meetings the LCCI arranged with the Supervising Engineer to conduct weekly inspections of the ongoing road works, which resulted in significant changes to the final work. Recommendations from the LCCI saw the following included (but not all):

- ❖ Inclusion of Bus stops along the Highway to Bugandi
- ❖ Widening of the drain near Bugandi to allow people to walk safely
- ❖ Kerbing and footpaths on Coronation Drive and other roads
- ❖ Re-design of Huon Road in front of the Eriku shopping centre, to allow proper drainage and so pedestrian safety could be maintained.
- ❖ The main drain from 9<sup>th</sup> Street to 7<sup>th</sup> Street was cleared and repaired so that it catered for the water outflow from Coronation Drive and 7<sup>th</sup>, 8<sup>th</sup> and 9<sup>th</sup> Street as well as Central Avenue.
- ❖ The roundabout at 7<sup>th</sup> Street junction with Huon Road was constructed.
- ❖ Some of the roads that were damaged when used as bypass roads were reconstructed, which included 2<sup>nd</sup>, 3<sup>rd</sup> and 4<sup>th</sup> Street as well as 14<sup>th</sup> Street.
- ❖ Urged the Government through our then Lae MP to conduct an investigation into the Lae road works.
- ❖ Regularly advised the travelling public on status of the road works.

As far as we are aware the roads to be constructed under stage 3 of the Lae City Roads Reconstruction Project, will be all done properly, with proper designs, supervision and testing. The Project Engineers have already stated that any work that is not up to standard will have to be ripped up and re-done at the contractor's expense. If of course we see some incorrect procedures taking place, we will be the first to voice our opinion and seek expert advice.

**AVIS**  
We try harder.



**AVIS** has partnered with the Air Niugini Destinations Loyalty Program

**Earn 1000 Destinations points  
when you rent with AVIS. Conditions apply**

Contact our Central Reservations on Ph: 324 9400 Fax: 325 3767  
Email: [reservations@avis.com.pg](mailto:reservations@avis.com.pg)

PNG's No.1 Car Rental Company

**Kina Financial Services open their new office in the new ultra modern IPI Building.**

#### **TELIKOM ANNOUNCEMENT**

**The problem with the internet today was due to the Boroko Exchange being down that Telikom say was caused by power spikes during the frequent blackouts.**

**BORA BRIDGE**  
**The Bora Bridge has been opened since 11 PM Thursday night (Thursday). A temporary patch up of the abutments has allowed the bridge to take trucks with a maximum load of one container. Work on the Bridge will continue until it is restored to full capacity (See Report last Page)**

#### **WASHOUT ON BULOLO ROAD**

**There is a dangerous washout at Parakales Village near Zenag. Added to the Kumalu in flood and the Sam-sam Culvert you will need to proceed with caution on this road**

## **EXCEPTIONAL FROM ARRIVAL TO DEPARTURE.**

After flying in to Port Moresby, there's only one place you'll want to land. Airways Hotel offers PNG's finest accommodation, luxury facilities and world-class dining. Get pampered at Bliss the Spa, float away in the pool or lose the excess baggage in the state-of-the-art health and fitness complex. Whether you're here for business or pleasure, your stay will be first class.



**AIRWAYS HOTEL**  
PORT MORESBY

**ALWAYS A PLEASURE**

Airways Hotel, Jacksons Parade, Port Moresby  
Tel 324 5200 Fax 325 0759  
reservations@airways.com.pg www.airways.com.pg

## **KINA FINANCIAL SERVICES OPENS NEW CENTRE IN LAE**

PNG's largest domestic based financial services group Kina Financial Services opened a major new centre in Lae today to further service the Lae and highlands regions.

The Governor of the Bank of PNG Mr Loi Bakani performed the official opening of the new complex based on the ground floor of the largest and most modern building in Lae, the new IPI Building.

the Chairman of Kina Financial Services Sir Rabbie Namaliu sad at the opening that the new facility was firm indication that the continuing growth of enterprises and financial opportunities in PNG required significant back-up resources.

The new Lae complex opened today provides a major landmark centre for business and commerce in the region as well as individuals to receive expert advice and service from a fully equipped and staffed major financial centre," he said.

"As PNG continues to grow as an emerging nation in the global context, we must keep pace with what the people of the 21<sup>st</sup> century expect in terms of the various demands for financial services," he said.

Kina Financial Services CEO Syd Yates said that the new Lae financial services complex was located in the new premises developed by Nambawan Superannuation Fund.

"It is the largest and most modern building in Lae, is six (6) stories high with the top two floors holding ten (10) apartments and the first four (4) floors just for office space," he said.

"Sitting on the edge of Top town overlooking the old airport, bay, and market districts it is indicative on the future investment which will be taking place in Lae.

"Kina is proud to be associated with Nambawan in this project which demonstrates the financial commitment to growth and opportunity which is now part of the daily financial development of PNG," Mr Yates said.

KFS understands the need of Papua New Guineans to have access to good financial advice and services and in this centre we have major operation to allow us to meet face to face with customers at all levels to assist and advice them in their financial matters.

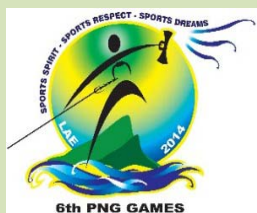
"People can now come into the centre and buy and trade shares, discuss investment alternative and opportunities, make loan applications for business and homes and for all personal financial management needs.

"Whilst we have been represented previously in Lae, the growth of the PNG economy is such that businesses must also grow to ensure that the whole economy benefits from the resources, infrastructure and agricultural industries expansion.





## The PNG Games will be held in Lae in 2014



The Host Organising Committee (HOC) humbly invites you to be part of Papua New Guinea's very own game, the PNG GAMES 2014.

- The success of the 6<sup>th</sup> PNG Games in Lae from 16- 29<sup>th</sup> November 2014 will very much depend on how we the stakeholders and the community in Lae and Morobe Province interact and cooperate.
- Your partnership in association with the Host Organising Committee is vital and needed to successfully stage the 2014 PNG Games.
- Your contribution, effort and commitment will not go astray.
- You are part of Lae: Let's make it happen for Lae and Morobe Province.

### OFFICIAL ADDRESS AND CONTACT

Chairman, Host Organising Committee,  
PNG Games 2014,  
C/- P O Box 1991, LAE 411  
Morobe Province.

#### Telephones:

4791200/1/2; 4791220

Facsimile:4791550

#### Email:

[pnggames2014@global.net.pg](mailto:pnggames2014@global.net.pg)

Location:Ground Floor,  
PNG Sports Foundation  
– Momase Region  
Sir Ignatius Kilage Indoor Stadium








**Depots in Lae & POM**

**HUGE RANGE OF SHIPPING CONTAINERS AVAILABLE RIGHT HERE IN LAE**

Head Office: **+675 472 5143** email: [sales@tradecorppng.com](mailto:sales@tradecorppng.com) [www.tradecorppng.com](http://www.tradecorppng.com)

**TRADECORP PNG LIMITED**

### WORLD CHAMBER FEDERATION NEWS



## CERTIFICATE OF ORIGIN

**WCF provides a critical advocacy and representation role at the global level, promoting the role of chambers as competent authorities in the issuance of COs and the acceptance of electronic COs.**

Millions of COs are issued every year, facilitating trade around the world. Since as early as 1898, chambers of commerce have been issuing non-preferential COs and more recently, closely working with Customs authorities, issuing preferential COs.

The 1923 Geneva Convention and subsequent Kyoto Convention have seen governments formally recognize the important role chambers play in this domain, deeming them competent authorities and credible trusted third-parties in the issuance of COs.

Virtually every country in the world considers the origin of imported goods when determining the duty that will be applied to the goods or, in some cases, whether the goods may be legally imported at all.

In addition, COs may be needed to comply with letters of credit, foreign customs requirements or a buyer's request.

The main CO is the '*non-preferential type*', which certifies that the country a particular product originates from does not qualify for any preferential treatment. A 'preferential' certificate, on the other hand, enables products to benefit from tariff reductions or exemptions when they are exported to countries that extend these privileges.

## The International School of Lae

Bumbu Road, Eriku

**ENROLMENTS for 2014**

**Toddlers – Grade 6**

**4791426 72446123**

**Office Open - 8 January, 2014**

(School starts 28 January)



*United We Learn*

The Lae Chamber of Commerce currently offer the **CERTIFICATE OF ORIGIN services**. We only do manual Non-preferential types.

Please enquire with Wendie on 472 2340 or at [info@lcci.org.pg](mailto:info@lcci.org.pg)



**Ela Motors**  
**USED VEHICLES**

Your First Choice

**16 DEALERSHIPS**  
**NATIONWIDE**

[www.elamotors.com.pg](http://www.elamotors.com.pg)

**GREAT SAVINGS ON OUR USED VEHICLES**



**OWN ONE NOW**

Milfordhaven Road, PO Box 3182, Lae, Morobe Province, PNG | PH: 478 1800 | FAX: 472 2463

## WCF's Certificate of Origin services

WCF reinforces and enhances the unique position that chambers of commerce hold in issuing and guaranteeing certificates.

WCF's International Certificate of Origin Guidelines establishes the standard procedures for issuing and attesting COs by chambers. This set of international standard rules and procedures reinforces the trust and integrity of the chamber CO "chain", not only for benefiting traders but also Customs administrations.

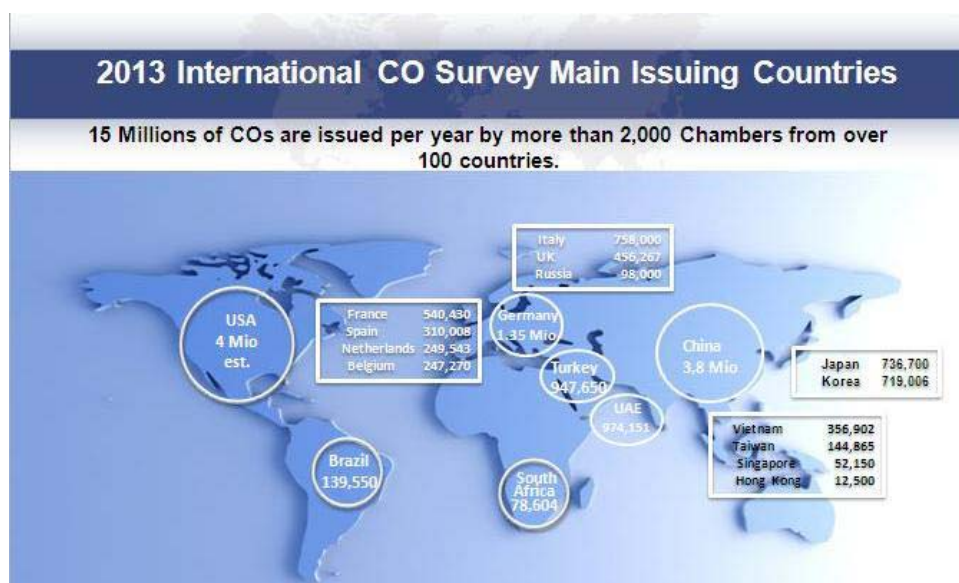
The guidelines:

- Support transparent issuance standard procedures
- Provide assurance for independent, responsible, and accountable issuance
- Give credibility to the COs issued by chambers of commerce
- Raise the level of acceptance by customs administrations and the business community

Building upon these guidelines, WCF provides a critical advocacy and representation role at the global level, promoting the role of chambers as competent authorities in the issuance of preferential COs and the acceptance of electronic COs.

WCF provides an international accreditation system for chambers, creating a vital global CO chain that reinforces their interconnections in delivering this service. Training and capacity building programmes would be available to support this work.

Follow us on [Twitter](#) to find out about official updates on CO issuing practices.



**Business Broadband**  
**Always On Fixed Price Internet**  
**Now available in Lae, Kimbe and Alotau**

**Niugini Infocom**



- Free Installation
- Fast Reliable Network
- Business Email @[yourdomain.com.pg](mailto:yourdomain.com.pg)
- 99% Uptime SLA
- Unlimited use (6:1 contention)
- Premium plans also available (3:1 and 1:1)
- Speeds up to 10mbps

- 512 kbps - K990+GST monthly
  - 1024 kbps - K1980+GST monthly
  - 2048 kbps - K3960+GST monthly
- Interested? - Contact us on:  
Phone: 472 4400—Digicel: 70544944  
Website: [www.infocom.net.pg](http://www.infocom.net.pg)



## Free Company Profile

You can profile your company or a product!

To find out how Contact us at 472 2340.

Letter from  
MOROBE MINING JOINT  
VENTURES

### Manus Shipping Service



## Dawapia Shipping

A subsidiary of  
**ENB Port Services Limited.**

Capable of carrying:

- ☐ Containers
- ☐ Breakbulk
- ☐ Reefers
- ☐ Project Cargo
- ☐ & Bulk Fuel

We also specialize in:

- Stevedoring | Road Transport
- Ships Agency | Logistics | Customs Broker | Coastal Ship Owners | Equipment Hire | Freight Forwarding | Port Management | Warehousing

**"We are PNG!"**

*Booking | Freight Enquiries*

**CONTACT:**  
Lae Agent;  
Tony Brudner  
Operations Manager  
Email: [phycos@enb.com.au](mailto:phycos@enb.com.au)  
Mobile: +675 76837445  
PO Box 3459, Lae, MP  
Shed No.4, Pagani Complex  
Erica Street

Lorengau Agent;  
Angela Knight  
RL & VJ Knight  
Email: [phycos@enb.com.au](mailto:phycos@enb.com.au) or [angela.knight@enb.com.au](mailto:angela.knight@enb.com.au)  
Phone: +675 970 9159/9393  
Fax: +675 9709285

**Dawapia Shipping**

Landing craft "Warangoi" & "Torio" VESSELS in class





# MOROBE MINING JOINT VENTURES

16 December 2013

Mr Alan McLay, OL  
President  
Lae Chamber of Commerce & Industry, Inc.  
PO Box 265  
**Lae 411**

Dear Alan,

### SUBJECT: Wafi-Golpu Project – Underground Exploration Feasibility Study

We are pleased to announce plans to complete a feasibility study to evaluate an underground exploration programme for the Wafi-Golpu Project. This is a new phase for the project and is a critical next step in the evaluation of the globally significant Wafi-Golpu resource.

Embarking on this new phase of work this will require Morobe Mining to make changes to our current work programs on site. Surface resource drilling is concluding this month and this will see a number of employees, contractors and their staff leave the business due to this reduction in site activity. This is a difficult but necessary transition. We are working through the details of exactly what this means with affected stakeholders to ensure that we are able to manage through the reduced site activities over the next 12 months as we transition from surface drilling to underground exploration phase of the project.

The next phase of work requires a feasibility study to be undertaken on an exploration shaft and associated underground staging platforms to complete deep underground drilling and bulk sampling of the ore body (See Figure 1).

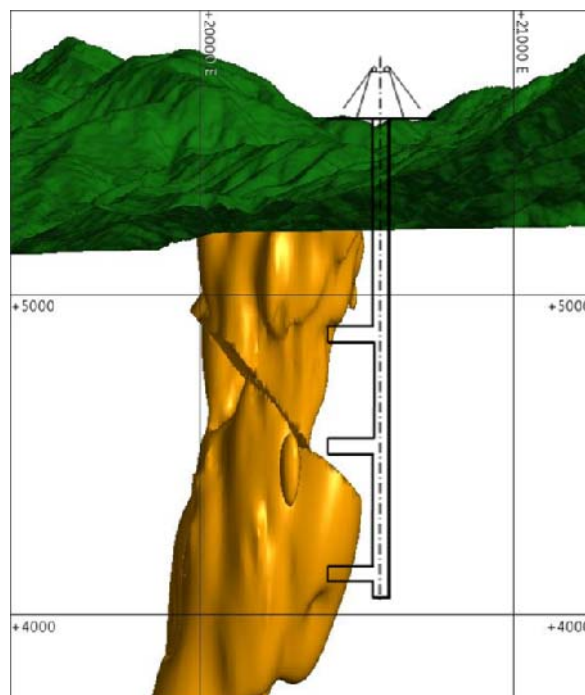


Figure 1: Scheme of Underground Exploration Shaft at the Golpu Orebody

## NO.1 HIRE CAR

"Your alternative Car Rental Choice"

17 Branches Nationwide

Range of 4WD D/Cabs, Troopers (10 Seaters), Sedans & Buses. Call Central Reservations at:-  
Lae (HQ) – Nasfund Haus, 2<sup>nd</sup> Street Lae

**Ph: 479 1546/472 2799 Mobile: (B) 686 7580/690 3585/690 3115  
(D): 7256 7179/7280 7360/7220 2460 Fax: 472 2798/472 8700**

Email: [mpss@datec.net.pg](mailto:mpss@datec.net.pg)

"WITH OUR EXTENSIVE REPRESENTATION, WE ARE IN A POSITION TO MEET ALL YOUR CAR HIRE ARRANGEMENTS"

### Wafi-Golpu Project (Cont)

Commencement of underground access to the orebody is not expected until late next calendar year following consideration by the owners of the feasibility study results and all permits and approvals being in place, including a development framework. Geotechnical drilling to identify a suitable exploration shaft location is underway.

Other world class deposits such as Oyu Tolgoi in Mongolia and Cadia East in Australia have involved similar underground exploration as part of their exploration process. As ore bodies become deeper and more complex, like Golpu this chosen method of exploration is more common.

Underground exploration has not been widely conducted before in PNG on this proposed scale given the majority of current and historic mining has been in open pits. The move to underground exploration for deep resources such as Golpu will require us to work closely with Government and Regulators to ensure that there is a full understanding of the process and legislative requirements.

The Johannesburg office of the engineering consulting firm Worley Parsons TWP has been engaged to prepare the feasibility study for the proposed exploration shaft. Their engagement also includes a review of an associated lower capital expenditure development option for the Golpu deposit to underpin the commercial decision to sink an exploration shaft.

When the exploration shaft construction commences this will create further local employment opportunities and generate local business development opportunities.

MMJV remains committed to a level of community investment in the Wafi-Golpu project area commensurate with the level of field activity and includes local business participation, community infrastructure projects, education, health and community capacity building programs – all designed to help prepare the communities for an eventual large scale mining project.

The announcement of the Golpu Project commencing the feasibility study to evaluate an underground exploration programme is indeed exciting and takes us another step closer to establishing the Morobe region as a world class mineral province. It remains of critical importance to manage our business safely in a sustained lower gold price environment.

Sincerely,

**Greg Jackson**

Chief Executive Officer

*Full copies of the announcement are published on our Owners and MMJV websites*

Harmony – [www.harmony.co.za](http://www.harmony.co.za)

Newcrest – [www.newcrest.com.au](http://www.newcrest.com.au)

MMJV – [www.morobejv.com](http://www.morobejv.com)

*Please contact David Wissink, General Manager Sustainability & External Relations on email [david.wissink@morobejv.com](mailto:david.wissink@morobejv.com) or on mobile +675 7031 6561 for additional details*

Ever thought of going to magnificent Walindi?

This discount is offered to LCCI Members.

**AIRWAYS HOTEL  
OFFER DEALS ON  
ROOMS TO LCCI  
MEMBERS**

Read about it:



## WALINDI RESORT SPECIAL 20% OFF ACCOMMODATION

Walindi Plantation Resort would like to offer all LCCI Members  
20% off accommodation for travel between  
December 2013 and March 2014.\*

To make a reservation, please contact [resort@walindifebrina.com](mailto:resort@walindifebrina.com) or 7234 8460

\*Conditions apply\* \*Two night minimum stay\* \*Applies to new bookings only\*

## Airways Hotel

Offers the following deals to members of the Lae Chamber of Commerce



Lae Chamber of Commerce Inc

VALID FROM 1<sup>st</sup> OF JANUARY UNTIL 30<sup>th</sup> OF JUNE 2014

ROOM TYPE	ROOM ONLY	INCLUSIVE OF FULL (COLD & HOT) BUFFET BREAKFAST AT VUE RESTAURANT		COMPLIMENTARY LAUNDRY	INCLUSIONS
		Single	Double		
Bacchus Room	K 750	K 775	K800	--	<ul style="list-style-type: none"><li>24 hour Complimentary WiFi browsing at Seven C's.</li><li>Complimentary access to Health &amp; Fitness Club</li><li>Complimentary access to Swimming Pools</li></ul>
Fountain Room	--	K 850	K 875	--	<ul style="list-style-type: none"><li>Complimentary WiFi browsing at Fountain Lounge</li><li>Access to the Fountain Lounge for Breakfast Champagne &amp; Pastries and Martini Hours</li><li>Complimentary access to Health &amp; Fitness Club</li><li>Complimentary access to Swimming Pools</li></ul>
Dakota Room	--	K 950	K 975	<ul style="list-style-type: none"><li>2 pcs. laundry (excludes dry cleaning)</li></ul>	<ul style="list-style-type: none"><li>Complimentary WiFi browsing at Touch Lounge, Sound Lounge and Sight Lounge</li><li>Access to the Dakota Lounges for Breakfast Champagne &amp; Pastries and Martini Hours</li><li>Complimentary access to Health &amp; Fitness Club</li><li>Complimentary access to Swimming Pools</li><li>24 hour Butler Service</li></ul>
Dakota Junior Suite	--	K 1050	K 1075	<ul style="list-style-type: none"><li>3 pcs. laundry (excludes dry cleaning)</li></ul>	
Dakota Suite	--	K 2000	K 2000	<ul style="list-style-type: none"><li>Full laundry (excludes dry cleaning)</li></ul>	

- All rates are subject to 10% GST per room night.

\*\*\* (If your booking originates from outside PNG by email, we will be able to offer tax exemption of 10% GST). Conditions apply

- Rooms are subject to availability at time of booking.  
For Group Bookings, Conference Packages and other special requirements, please contact us for special rates

Mel Gordon  
Director – Brand Optimisation



## 39<sup>th</sup> National Game Fishing Titles to be held in Lae

## 2014 Record Morobe Provincial Budget



**LAE CITY HOTEL**  
*True Papua New Guinea Experience*

**Central Reservations**  
TEL (+ 675) 472 0138  
(+ 675) 472 0129  
(+ 675) 472 0126

**Lae City Hotel**  
is a new vibrant and luxurious Hotel in Lae Top Town

*When in Lae for Business or Pleasure, check our range of services for your comfort*

**Conveniently located in the heart of Lae City**

**Fully serviced rooms**

**Air - conditioned rooms with ensuite and Satellite TV**

**Fully stocked bar and restaurant facilities**

**Wireless internet and International Dial Access**






P.O.Box 3395, 3rd St. Lae, Morobe, Papua New Guinea. Ph: 472 0138, Fax: 472 7373 [www.laecityhotel.com](http://www.laecityhotel.com) email: info@laecityhotel.com

## The 39<sup>TH</sup> NATIONAL GAME FISHING TITLES WILL BE HELD IN LAE IN 2014

The **Lae Game Fishing Club** is set to host the 39<sup>th</sup> National Titles in 2014 from 11<sup>th</sup> – 21<sup>st</sup> April. We only get the chance to showcase the rich fishing grounds here in the Morobe Province once every 4 years. It is expected that over 400 anglers and guests will attend from all over PNG and internationally.

The LGFC is calling on local and national business houses to help by providing sponsorship support to make this the biggest and best National Titles that PNG has ever seen!

If you are interested in finding out more please email [secretary@lgfcpng.com](mailto:secretary@lgfcpng.com) for an information booklet.



## Morobe Provincial Government BUDGET

*By our business representative on the Tutumang Mrs. Nellie McLay*

The Morobe budget that was presented to the Tutumang (Provincial Assembly) by the Morobe Governor Hon. Kasiga Kelly Naru on 17<sup>th</sup> December. As stated in his budget speech the Governor aims to make a difference in the Province, the Districts and the Local Level Government areas right down to the Ward level. The 2014 budget will embrace at the same time the National Governments goals.

The budget is meant to acknowledge the efforts that the National Government has professed to have made to fairly distribute the financial wealth that the country has generated and the efforts it has made to uphold the values of integrity, transparency and honesty.

The Governor said that the National Government had given Morobe a lion's share of the provinces' budget. It recognizes that Lae is the Industrial and economic hub of Papua New Guinea. The 2014 budget is a record K371,616,200.00.

## ATLAS STEEL HOUSING

With extensive CAD facilities, computer-controlled framing machines, and industry-best PO-to-Despatch turn-around, see us for your next building projects



**Atlas Steel-P.N.G**

Lae Branch Ph: 479 1566 Fax: 472 0639  
Pom Branch Ph: 321 1233 Fax: 321 1053



**Shangri La Hotel renews special offer to LCCI Members.**



**PNG Report**  
Magazines are available. Collect your free copy from the LCCI

**PNG RESOURCES  
MAGAZINE**

**ISSUE NO.3 2013**

**NOW AVAILABLE FOR  
COLLECTION FROM  
THE LCCI**

## SHANGRI LA HOTEL CAIRNS

Renewal of the special offer for Lae Chamber members - continue reading:



**Shangri-La hotel**

THE MARINA, CAIRNS

10 December 2013

Alan McLay  
**Lae Chamber of Commerce and Industry**  
PO Box 625  
Lae, Morobe  
Papua New Guinea  
[president@lcci.com.pg](mailto:president@lcci.com.pg)

Dear Mr McLay,

### RE: CORPORATE RATES 2014

Thank you for your interest in Shangri-La Hotel, The Marina, Cairns. It is our pleasure to welcome Lae Chamber of Commerce and Industry as one of our most valued customers. By way of this letter, we are pleased to offer you our 2014 Corporate Rates for Lae Chamber of Commerce and Industry which you may start to enjoy upon signing this contract. Please note that these rates are valid until 30 December 2014.

ROOM TYPE	PUBLISHED RATES	YOUR CORPORATE RATES (Single / Double)
Superior Room (Garden/Pool/City View)	AU\$351.00	AU\$162.00
Superior Sea View Room	AU\$375.00	AU\$175.00
Deluxe Marina View Room	AU\$385.00	AU\$185.00
Horizon Club Marina View Room	AU\$475.00	AU\$280.00
Executive Suite	AU\$485.00	AU\$290.00
One Bedroom Suite	AU\$510.00	AU\$315.00
Horizon Club Marina View Suite	AU\$520.00	AU\$335.00
Royal Suite	AU\$1200.00	AU\$800.00

These rates include 10% GST and are non-commissionable. As one of our highly preferred accounts, these rates are extended based on minimum projected production of 25 room nights annually. Please note that these rates are not applicable to group bookings of more than 9 rooms per night however we would be delighted to offer you competitive group rates upon request.

In addition to the above discounted rates, you and your guests will enjoy the following benefits:

- **Complimentary internet access**
- Complimentary access to Your Fitness Gym located at the ground floor of The Pier Shopping Complex, open 24 hours.
- Daily newspaper
- Mileage credits with 32 international airlines worldwide (members only)
- Invitation to join Shangri-La's frequent guest recognition program - (Golden Circle Program)

Please note that these rates are not available 11<sup>th</sup> – 15<sup>th</sup> May, 17<sup>th</sup> – 21<sup>st</sup> September 2014, as well as 31<sup>st</sup> December 2014.



#### Services Offered:

- Teeth cleaning & Whitening
- Betel nut stain removal
- Fillings
- X-Rays
- Prosthodontics (Crowns, Bridges, Veneers)
- Dentures
- Extractions
- Orthodontics (Braces, Plates)
- Oral Surgery including wisdom teeth removal

**10 % Off All Dental Treatments  
for LCCI Members**



#### BOOK NOW ON:

Email: [administrator@lih.com.pg](mailto:administrator@lih.com.pg)  
Phone: 472 7133

\* Offer valid until 31st October 2013



**BORA BRIDGE  
EMERGENCY REPORT**

*Provided by Department of Works*

***BORA BRIDGE – report by Kingsford Kassen a/Provincial Works Manager***

**1.0 SITUATION REPORT.**

On the night of Sunday 15<sup>th</sup> December 2013, heavy rains in the foot hills of Ramu caused flash flooding that resulted in severe scouring of the bridge abutments. This caused the bridge to settle on the Ramu approach by about 100mm.

The scouring occurred when trees washed down from the river got caught up in the narrow clearance that resulted from heavy siltation. Access was only allowed for light vehicles when the DoW team from Lae had a site inspection (Monday 16<sup>th</sup> December 2013) with Ramu Agro Official on site to discuss the next course of action.

We all agreed to commence works onsite as soon as possible. DoW Lae was to provide materials and Ramu Agro to provide accommodation and food for the officers involved.

**2.0 PROPOSED REMEDIAL WORKS.**

The remedial works proposed are as follows:

- Opening up of the relieve culvert to reduce to flow of the river once works commence.
- Elevation of the bridge over and above its current level to increase clearance for the river to flow easily.
- Extension of the bridge to induce additional anchorage to prevent the bridge from being washed away.
- Construction of gabion abutments and backfilling of the approaches.

**3.0 WORKS EXECUTED.**

Straight after the meeting we headed back to Lae to commence preparation and shifting of materials to site. 8 additional bays of compact 100 bailey bridges were sourced from the Ex Yumi Yet stock for the purpose and loaded the same day.

The bridge parts have arrived on site and are being unloaded Tuesday and works commenced Wednesday morning as we cannot risk working at night in case of flooding.

**4.0 COMMENCEMENT OF WORK.**

Work on the bridge commenced today on site. Activities were:

- Hauling of rock boulders from Singing Creek for backfilling and riprap
- River training and placing of rock riprap on the river bed to control flow
- Opening up of the relieve culverts to reduce river level for ease of work on the bridge
- Cleaning of bridge on collapsed abutment to allow for jacking and packing to lift the bridge.
- Excavation of pavement edge to create clearance for the launching of the extra bays on both approaches.
- Setting up of bearing and base plate for placing of bridge and Backfilling of approaches and traffic to be opened.
- First vehicle passed through at 10:00pm on Thursday night.

**5.0 REMARKS**

- With the assistance of Ramu Agri Industries and our faithful contractors, we managed to get the bridge up and open to the travelling public and business houses. All cost associated and incurred by Ramu and the contractors will be settled at a later date as agreed.
- Works will still continue on the abutment with construction of gabion retaining structure that will act as the abutment. River training will continue and the placing of riprap for abutment and bank protection works will also be executed.
- The tireless effort of my staff and RAI has paid off with the opening of the bridge.



**AAA  
PROPERTIES**

*"Your choice of  
Comfortable  
&  
Secured  
Apartments  
in Lae"*

For inquiries,  
call in our **Lae Office**  
located at: Malaita Street,  
(Sect. 19 / Lot 19)  
Lae Morobe Province  
PAPUA NEW GUINEA

Office: **+(675) 472 5419**  
Mobile: **+(675) 719 78009**  
Email: [properties@zenagchicken.com.pg](mailto:properties@zenagchicken.com.pg)  
Web: <http://www.aaazenag.com.pg>



**NOW AVAILABLE**

Working at Night to get the job done

